

Bay Mills Indian Community
Brimley, Michigan 49715

*Grand Traverse Band
of Ottawa & Chippewa Indians*
Suttons Bay, Michigan 49682

Hannahville Indian Community
Wilson, Michigan 49896

Saginaw Chippewa Indian Tribe
Mt. Pleasant, Michigan 48858

*Little Traverse Bay
Bands of Odawa Indians*
Harbor Springs, Michigan 49740

*Nottawaseppi Band of
Huron Potawatomi*
Fulton, Michigan 49502



An Equal Opportunity Employer

Keweenaw Bay Indian Community
Baraga, Michigan 49908

*Lac Vieux Desert Band
of Lake Superior Chippewa*
Watersmeet, Michigan 49969

*Sault Ste. Marie
Tribe of Chippewa Indians*
Sault Ste. Marie, Michigan 49783

*Pokagon Band of
Potawatomi Indians*
Dowagiac, Michigan 49047

*Match-E-Be-Nash-She-Wish
(Gun Lake Tribe)*
Dorr, Michigan 49323

2956 Ashmun Street, Suite A, Sault Ste. Marie, Michigan 49783
Phone: (906) 632-6896 Main Fax: 906-632-1810

FOR IMMEDIATE RELEASE

APPLE AND ANDROID APP FOR FISH EATERS THE ANISHINAABE GIGIIGOO'INAAN "OUR FISH" APP

SAULT STE. MARIE, MICHIGAN -- The Inter-Tribal Council of Michigan (ITCMI) in partnership with The Medical College of Wisconsin (MCW) has released the updated version of the Gigiigoo'inaan Application (App for iPhones, AndroidS, or similar Smart devices) to guide users in their fish-eating choices throughout the Great Lakes and Bemidji Region waterways. Environmental exposures in the waterways such as PBT or Mercury can disturb human health. The Gigiigoo'inaan "Our Fish" App makes personalized recommendations for safe fish consumption based on the user's biological sex, weight, portion size, and the waterway where fish is coming from.

The input for the design and content of the app came from representatives from the 5 Chippewa Ottawa Resource Authority (CORA) tribes; Bay Mills Indian Community, Grand Traverse Band of Ottawa and Chippewa Indians, Little River Band of Ottawa Indians, Little Traverse Bay Bands of Odawa Indians, Sault Ste. Marie Tribe of Chippewa Indians.

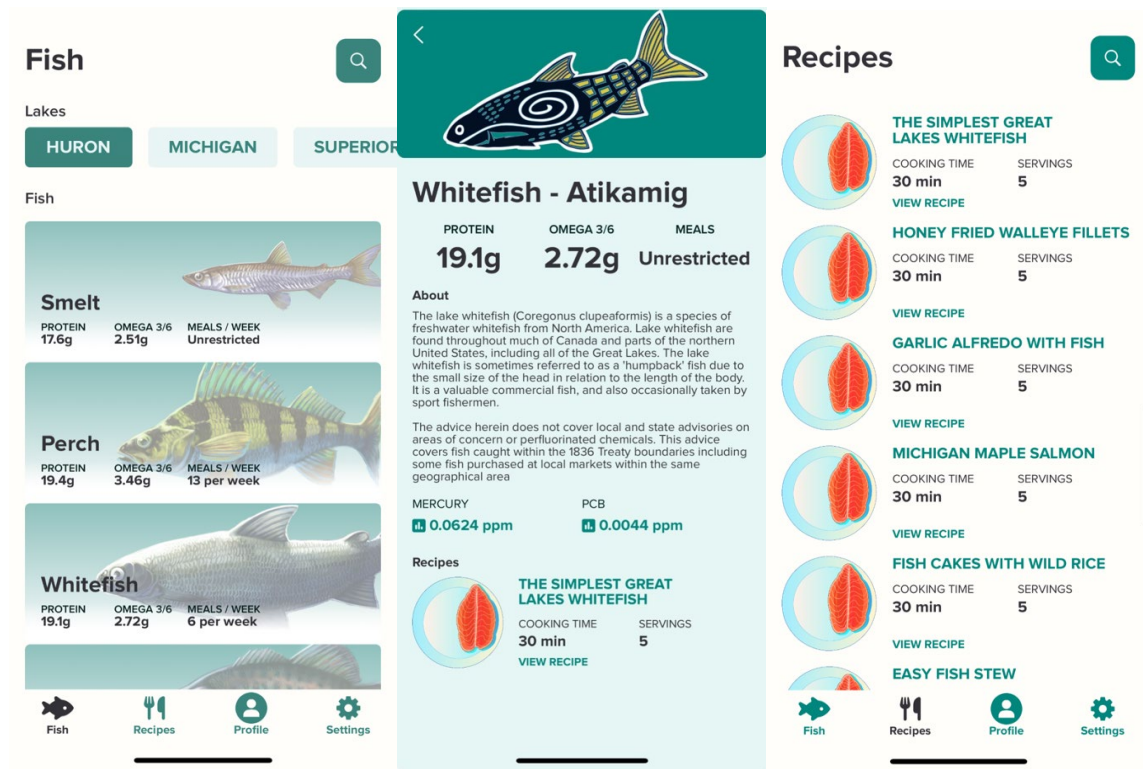
Features of the app support help users of all ages and life phases make informed choices regarding fish consumption by providing personalized recommendations for fish harvested from Lakes Huron, Michigan, Superior, Inland Lakes and even Store-bought Fish. The app includes details of the fish's habitat, behaviors and in some circumstances gaming regulations to support sustainable harvesting. The app also features simple and affordable fish recipes from the local regions. A significant and valued feature of the App is that it DOES NOT collect or store any personal data.

Fish are more than just a healthy food source for the Anishinaabe. Cherished fishing traditions are threatened by environmental risks. This work is significant because it addresses the need for effective fish consumption advice for the Anishinaabe whose tribal governments oversee treaty-related natural resource practices in Northern Michigan, Wisconsin, and Minnesota.

This app is the result of a multi-year project aimed to develop culturally tailored advice to encourage consumption of low contaminated species of fish among Native American Anishinaabe peoples and waterways. However, this app supports safe fish consumption for people of all races.

The app was previously tested in Michigan tribal communities in 2019 and reviewed again in 2023/2023. It was observed that app users reported improved confidence, increased fish consumption and increased understanding of environmental health in response to the Gigiigoo'inaan "Our Fish" App. The Inter-Tribal Council of Michigan and the Medical College of Wisconsin are grateful for the input and support provided by the Anishinaabe people which makes this resource available for all.

Those looking for more information on the Gigiigoo'inaan "Our Fish" app <https://www.itcmi.org/fishapp>



Download the Gigiigoo'inaan "Our Fish" App:



<https://bit.ly/m/FishApp?r=qr>

###

The Inter-Tribal Council of Michigan, Inc. is a 501(C)3 non-profit corporation duly organized under a state charter filed April 16, 1968. The agency represents all twelve federally recognized tribes in Michigan. The agency is divided into several different divisions, including headstart; early headstart; health services; behavioral health; environmental services; child, family, and education services; and administration. The agency employs approximately 160 employees. 35 of these employees are based in the agency's central office in Sault Ste. Marie, while member tribes have offices and staff on site. Visit <http://www.itcmi.org/> to learn more about the agency.

Media Contact:
 Mike Willette
 Communication Specialist
 Inter-Tribal Council of Michigan
 906-632-6896 x.154
mwillette@itcmi.org