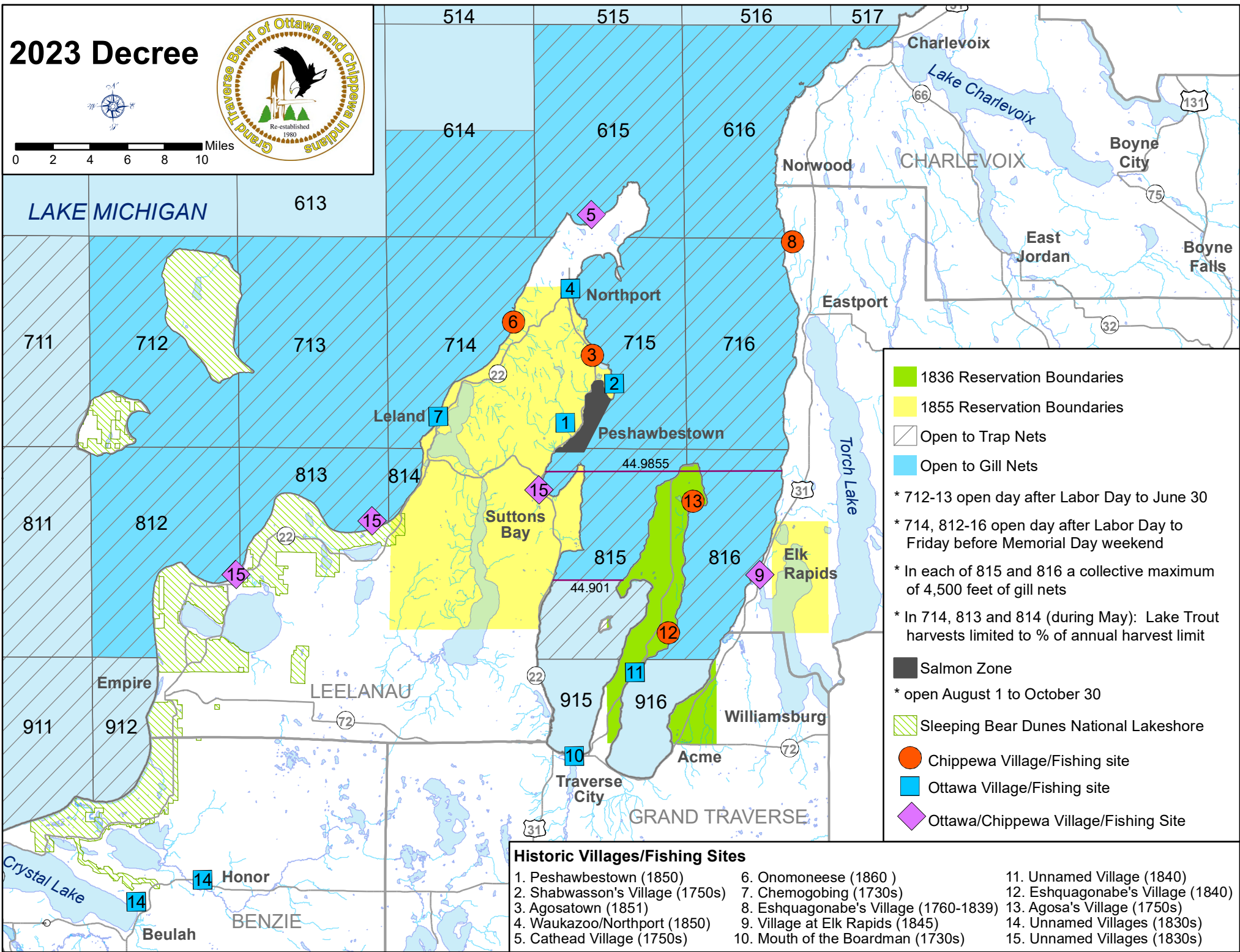


2023 Decree



- 1836 Reservation Boundaries
- 1855 Reservation Boundaries
- Open to Trap Nets
- Open to Gill Nets
- * 712-13 open day after Labor Day to June 30
- * 714, 812-16 open day after Labor Day to Friday before Memorial Day weekend
- * In each of 815 and 816 a collective maximum of 4,500 feet of gill nets
- * In 714, 813 and 814 (during May): Lake Trout harvests limited to % of annual harvest limit
- Salmon Zone
- * open August 1 to October 30
- Sleeping Bear Dunes National Lakeshore
- Chippewa Village/Fishing site
- Ottawa Village/Fishing site
- Ottawa/Chippewa Village/Fishing Site

Historic Villages/Fishing Sites

- | | | |
|---------------------------------|---------------------------------------|-----------------------------------|
| 1. Peshawbestown (1850) | 6. Onomoneese (1860) | 11. Unnamed Village (1840) |
| 2. Shabwasson's Village (1750s) | 7. Chemogobing (1730s) | 12. Eshquagonabe's Village (1840) |
| 3. Agosatown (1851) | 8. Eshquagonabe's Village (1760-1839) | 13. Agosa's Village (1750s) |
| 4. Waukazoo/Northport (1850) | 9. Village at Elk Rapids (1845) | 14. Unnamed Villages (1830s) |
| 5. Cathhead Village (1750s) | 10. Mouth of the Boardman (1730s) | 15. Unnamed Villages (1830s) |