

# WE PROVIDE A COMPREHENSIVE ARRAY OF SERVICES



1

## PREVENTION EVENTS AND EDUCATIONAL ACTIVITIES

Niizh Animikiig program offers prevention events and activities for tribal youth and community members.

2

## BH ASSESSMENT, CASE MANAGEMENT, REFERRALS

Licensed Counselors provide: screening, assessment, mental health/addictions counseling, case management, and referrals to detox & treatment services.

3

## MICHIGAN DRIVER LICENSE ASSESSMENTS

Certified Advanced Alcohol and Drug Counselor provides evaluation and assistance in completing driver's license re-instatement paperwork.

4

## ACCESS TO TRADITIONAL HEALER

Traditional Healers provide their services monthly. Requests for names, colors, & clans. Healing ceremonies, Traditional medicines, & Spiritual guidance

5

## PEER RECOVERY COACHING

A Recovery Coach is available, willing to guide and mentor those seeking the recovery lifestyle with shared experience in recovery.

6

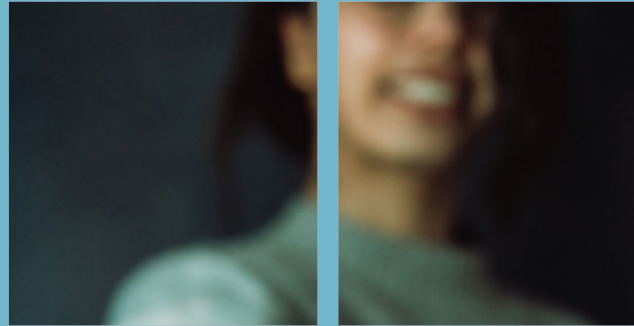
## INDIVIDUAL COUNSELING

Trained mental health/addictions counselors provide a variety of treatment modalities, such as motivational interviewing, CBT, DBT, Auricular Acupuncture, etc.

7

## PSYCHIATRIC SERVICES

Psychiatric care is through contracted services with an experienced provider who serves clients with a wide range of mental health disorders. This service is provided one day a week.



## BEHAVIORAL HEALTH

**Kathy Tahtinen MPA, CNP**  
Department Manager  
Office: (231) 534-7255  
Cell: (231) 631-9131

**Scott Scholten**  
Peer Recovery Coach  
Office: (231) 534-7247  
Cell: (231) 735-4451

**Marion Wabanimkee-Minzey**  
Office Coordinator  
Office: (231) 534-7090  
Cell: (231) 631-0140

2605 N West Bay Shore Drive  
Peshawbestown, MI 49682

**Mainline: (231) 534-7090**

Fax: (231) 534-7919

E-mail: [GOVBehavioralHealth@gtb-nsn.gov](mailto:GOVBehavioralHealth@gtb-nsn.gov)

[HTTPS://BIT.LY/GTB-BH](https://bit.ly/gtb-bh)



# AHKI MAADIZIWIN

## “ALL LIFE IN BALANCE”

“Today is a new beginning.  
With hope, Change can  
happen.”

THE ROLE OF BEHAVIORAL HEALTH IS TO PROVIDE ASSESSMENT AND ONGOING OUTPATIENT COUNSELING TO TRIBAL MEMBERS WISHING TO MAKE POSITIVE LIFE CHANGES.

[HTTPS://BIT.LY/GTB-BH](https://bit.ly/gtb-bh)

Our Culture is  
Stronger Than Any  
Addiction



# OUR PASSION YOUR WELLNESS

The Grand Traverse Band of Ottawa and Chippewa Indians recognizes the need for services related to prevention and treatment of substance use disorders, mental health disorders, and co-occurring disorders within the Tribe.

As a result, the Behavioral Health Services Program offers a variety of quality services to address these disorders with diverse treatment modalities.



**ALL CLINICAL STAFF POSSESS STATE LICENSURE AND/OR DRUG AND ALCOHOL CERTIFICATION IN PROVIDING THEIR COUNSELING SERVICES.**

“ Recovery takes  
time and effort

## 4 ELEMENTS OF MENTAL HEALTH



PHYSICAL



EMOTIONAL



SPIRITUAL



INTELLECTUAL

# OUR SERVICES

**OUR SERVICES ARE PROVIDED TO GRAND TRAVERSE BAND MEMBERS AND MEMBERS OF OTHER FEDERALLY-RECOGNIZED TRIBES THAT RESIDE IN THE SIX-COUNTY SERVICE AREA.**

**THE SIX COUNTIES INCLUDE LEELANAU, GRAND TRAVERSE, BENZIE, CHARLEVOIX, ANTRIM AND MANISTEE COUNTIES.**

The Behavioral Health Program is accredited by the Commission on Accreditation of Rehabilitation Facilities (CARF) for Substance Abuse and Co-Occurring Disorders Counseling. These services are provided in four locations: Peshawbestown, Traverse City, Benzonia, and Charlevoix.

### ASSESSMENTS & ONGOING OUTPATIENT COUNSELING

The role of Behavioral Health is to provide assessment and ongoing outpatient counseling to Tribal Members wishing to make positive life changes.

### MEDICATION MANAGEMENT AND PSYCHIATRIC EVALUATIONS

A contractual psychiatrist is here to provide medication management and psychiatric evaluations for adult patients (one day per week).

### CULTURALLY INTEGRATED TREATMENT

As a culturally integrated treatment program, Traditional Healers provide their services monthly.

**DON'T QUIT BEFORE THE  
MIRACLE HAPPENS...**

